



經濟市場檢閱 28 Feb 2026

免責聲明

本錄像內容並非投資意見，亦不構成任何投資產品之要約、要約招攬或建議。本資料只作為教育用途，它並沒有考慮您的個人需要、投資目標及特定財政狀況。投資附帶風險。雖然本資料內的內容是取自獲相信為正確的資料，但本人均不會對本資料內容之準確性、完整性、適時性、精確性作出任何聲明或保證。但本人及其關聯公司並不負上或承擔任何向任何人士或投資者作出建議的責任，亦不會就任何因為或就有關於使用或倚靠本資料或本資料之任何內容而引起之直接、間接或後果性損失承擔任何責任。本資料並不構成投資意見，亦不應被視為任何買入或賣出之招引。投資附帶風險，應尋求獨立的專業意見。

The Asset Class Quilt of Total Returns

Chart 20: Historical asset class performance by year

Ranked cross asset returns by year

2000	2001	2002	2003	2004	2005	2006	2007	2008	2009	2010	2011	2012	2013	2014	2015	2016	2017	2018	2019	2020	2021	2022	2023	2024	2025	2026*
Commodities 58.2%	US Treasuries 6.7%	Commodities 39.5%	MSCI EM 56.3%	REITS 32.0%	MSCI EM 34.5%	REITS 37.5%	MSCI EM 39.8%	US Treasuries 14.0%	MSCI EM 79.0%	Gold 29.2%	US Treasuries 9.8%	REITS 23.8%	S&P 500 32.4%	S&P 500 13.7%	S&P 500 1.4%	Commodities 17.5%	MSCI EM 37.8%	Cash 1.8%	S&P 500 31.5%	Gold 24.8%	Commodities 46.3%	Commodities 31.1%	S&P 500 26.3%	Gold 26.7%	Gold 60.7%	Gold 19.5%
US Treasuries 13.4%	Global IG 4.6%	Gold 25.6%	MSCI EAFE 39.2%	Commodities 28.7%	Commodities 33.7%	MSCI EM 32.6%	Commodities 33.0%	Gold 4.3%	Global HY 62.0%	MSCI EM 19.2%	Gold 8.9%	Global HY 19.3%	MSCI EAFE 23.3%	REITS 11.7%	US Treasuries 0.8%	Global HY 14.8%	MSCI EAFE 25.9%	US Treasuries 0.8%	REITS 27.4%	MSCI EM 18.8%	REITS 37.1%	Cash 1.5%	MSCI EAFE 18.9%	S&P 500 25.0%	MSCI EM 32.0%	MSCI EM 15.1%
REITS 8.5%	Cash 4.4%	Global IG 14.9%	REITS 33.5%	MSCI EM 26.0%	Gold 17.8%	MSCI EAFE 26.9%	Gold 31.9%	Cash 2.1%	MSCI EAFE 32.5%	REITS 15.9%	Global IG 4.5%	MSCI EM 18.6%	Global HY 8.0%	US Treasuries 6.0%	Cash 0.1%	S&P 500 12.0%	S&P 500 22.0%	Gold -1.9%	MSCI EAFE 22.8%	S&P 500 18.4%	S&P 500 28.7%	Gold -0.8%	Global HY 13.4%	MSCI EM 8.0%	MSCI EAFE 29.0%	Commodities 12.7%
Cash 6.2%	Global HY 3.1%	US Treasuries 11.6%	Commodities 30.1%	MSCI EAFE 20.7%	MSCI EAFE 14.0%	Gold 23.2%	MSCI EAFE 11.6%	Global IG -8.3%	REITS 31.7%	S&P 500 15.1%	Global HY 2.6%	MSCI EAFE 17.9%	REITS 0.7%	Global IG 3.2%	MSCI EAFE -0.8%	MSCI EM 11.2%	Gold 12.9%	Global HY -3.3%	Commodities 20.1%	Global IG 10.3%	MSCI EAFE 11.9%	US Treasuries -12.9%	Gold 12.7%	Global HY 7.5%	S&P 500 18.5%	MSCI EAFE 9.3%
Global IG 3.1%	Gold -0.7%	Cash 1.8%	Global HY 30.7%	Global HY 12.4%	REITS 10.7%	S&P 500 15.8%	US Treasuries 9.1%	Global HY -27.9%	S&P 500 26.5%	Global HY 13.9%	S&P 500 2.1%	S&P 500 16.0%	Global IG 0.1%	Gold 0.1%	REITS -3.4%	Gold 8.6%	REITS 11.5%	Global IG -3.4%	MSCI EM 18.6%	MSCI EAFE 8.4%	Global HY 1.4%	Global HY -13.2%	REITS 11.3%	Commodities 5.5%	Global HY 9.9%	REITS 9.3%
Gold -5.4%	MSCI EM -2.4%	Global HY -1.1%	S&P 500 28.7%	S&P 500 10.9%	S&P 500 4.9%	Global HY 13.5%	Global IG 7.3%	S&P 500 -37.0%	Commodities 26.1%	Commodities 13.3%	Cash 0.1%	Global IG 11.1%	Cash 0.1%	Cash 0.0%	Global IG -3.8%	Global IG 4.3%	Global HY 10.2%	REITS -3.9%	Gold 17.9%	US Treasuries 8.2%	Cash 0.0%	MSCI EAFE -13.9%	MSCI EM 10.1%	Cash 5.3%	Global IG 9.8%	S&P 500 1.6%
Global HY -5.8%	REITS -7.8%	REITS -2.4%	Gold 19.9%	Global IG 9.4%	Cash 3.1%	Global IG 7.2%	S&P 500 5.5%	Commodities -42.6%	Gold 25.0%	MSCI EAFE 8.2%	Commodities -2.6%	Gold 8.3%	Commodities -2.1%	Global HY -0.1%	Global HY -4.2%	REITS 1.3%	Global IG 9.3%	S&P 500 -4.3%	Global HY 13.7%	Global HY 8.0%	MSCI EM -2.3%	Global IG -16.7%	Global IG 9.5%	MSCI EAFE 4.4%	US Treasuries 6.1%	Global IG 1.6%
S&P 500 -9.1%	S&P 500 -11.9%	MSCI EM -6.0%	Global IG 14.5%	Gold 4.6%	US Treasuries 2.8%	Cash 4.9%	Cash 5.0%	MSCI EAFE -43.1%	Global IG 19.2%	Global IG 6.0%	REITS -9.4%	US Treasuries 2.2%	MSCI EM -2.3%	MSCI EM -1.8%	Gold -10.4%	US Treasuries 1.1%	Commodities 7.6%	Commodities -13.1%	Global IG 11.4%	Cash 0.5%	US Treasuries -2.4%	S&P 500 -18.1%	Cash 5.1%	REITS 3.2%	Commodities 5.9%	US Treasuries 1.4%
MSCI EAFE -14.0%	MSCI EAFE -21.2%	MSCI EAFE -15.7%	US Treasuries 2.3%	US Treasuries 3.5%	Global HY 1.5%	US Treasuries 3.1%	Global HY 3.0%	REITS -50.2%	Cash 0.2%	US Treasuries 5.9%	MSCI EAFE -11.7%	Cash 0.1%	US Treasuries -3.3%	MSCI EAFE -4.5%	MSCI EM -14.9%	MSCI EAFE 1.0%	US Treasuries 2.4%	MSCI EAFE -13.2%	US Treasuries 7.0%	REITS -4.4%	Global IG -3.0%	MSCI EM -19.8%	US Treasuries 3.9%	Global IG 1.2%	Cash 4.0%	Global HY 1.2%
MSCI EM -30.6%	Commodities -21.4%	S&P 500 -22.1%	Cash 1.1%	Cash 1.3%	Global IG -3.0%	Commodities -0.2%	REITS -10.0%	MSCI EM -53.2%	US Treasuries -3.7%	Cash 0.1%	MSCI EM -18.2%	Commodities -0.3%	Gold -27.3%	Commodities -29.3%	Commodities -29.4%	Cash 0.3%	Cash 0.8%	MSCI EM -14.3%	Cash 2.2%	Commodities -15.0%	Gold -4.1%	REITS -25.2%	Commodities -3.5%	US Treasuries 0.5%	REITS 3.5%	Cash 0.5%

Source: BofA Global Investment Strategy, Bloomberg. *2026 YTD

Three-month price performance by market and sector

3m price performance (USD returns)

Market	Basic				Cons.	Cons.	Health					
	Energy	Materials	Financials	Industrials	Disc.	Staples	Technology	Care	Telecoms	Utilities	Real Estate	
Asia	5%	1%	15%	2%	7%	-3%	-4%	12%	-1%	0%	2%	2%
India	-3%	-6%	8%	-1%	0%	-4%	-7%	-12%	-4%	-4%	0%	-10%
Indonesia	-4%	-1%	0%	-6%	6%	-1%	-5%		-13%	-3%	22%	-8%
Mainland China	-3%	8%	21%	-1%	6%	-3%	-4%	-12%	-3%	-5%	-2%	1%
Malaysia	13%	0%	15%	23%	-1%	8%	8%		10%	-3%	7%	14%
Philippines	18%	-4%		18%	25%	20%	12%			11%	8%	21%
Korea	47%	23%	25%	36%	15%	42%	12%	49%	2%	86%	25%	
Taiwan	25%	-8%	16%	12%	21%	-5%	-4%	28%	36%	16%		30%
Thailand	21%	26%	39%	16%	28%	21%	12%	9%	14%	27%	41%	30%
EMEA	12%	5%	26%	13%	16%	4%	7%	-20%	6%	11%	-1%	16%
Czech Republic	-4%			4%								-10%
Egypt	44%			44%								
Greece	14%	24%		15%	29%	-5%				5%	12%	
Hungary	23%	23%		25%					24%	16%		
Kuwait	-1%			-1%	1%					2%		-4%
Poland	17%	7%	60%	18%		7%	0%					
Qatar	6%	8%	-3%	9%	6%					1%	1%	-2%
Saudi Arabia	1%	-1%	8%	6%	-2%	-13%	-10%		-7%	3%	-14%	-5%
South Africa	18%	9%	35%	22%	10%	-1%	6%	-21%	38%	23%		13%
Türkiye	31%	20%	20%	33%	40%	23%	29%			31%	18%	
UAE	15%	3%		19%	8%	19%				12%		21%
LatAm	18%	18%	34%	19%	19%	10%	18%	-20%	-10%	9%	11%	17%
Brazil	16%	18%	30%	18%	13%	11%	11%	-20%	-10%	15%	11%	10%
Chile	22%	18%	28%	25%	4%	26%	13%				3%	30%
Colombia	20%	18%		21%	16%						20%	
Mexico	21%		42%	22%	24%	1%	22%			6%		15%

Source: FTSE Russell, FactSet, HSBC

美股



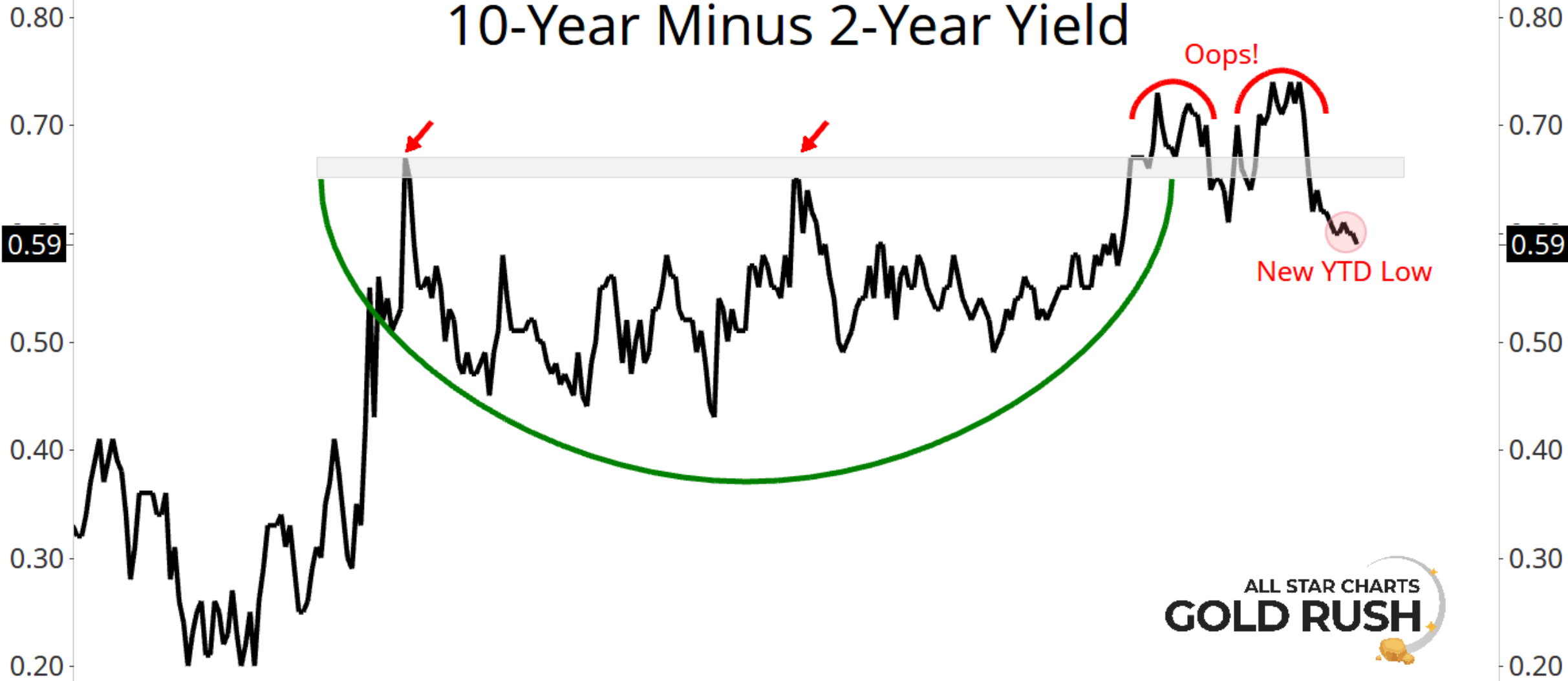
Exhibit 3: NVDA - Old vs. New Estimates

Financials (\$mn, except EPS)	2026E			2027E			2028E		
	GS	Old	Δ	GS	Old	Δ	GS	Old	Δ
Gaming	14,319	18,309	-21.8%	15,312	20,086	-23.8%	16,545	21,448	-22.9%
Pro Viz	4,773	3,126	+52.7%	5,104	3,343	+52.7%	5,464	3,579	+52.7%
Datacenter	370,677	357,324	+3.7%	495,560	483,880	+2.4%	605,994	591,588	+2.4%
Automotive	3,219	3,416	-5.8%	4,912	5,045	-2.6%	6,188	6,357	-2.7%
OEM & Other	644	696	-7.5%	644	696	-7.5%	644	696	-7.5%
Total Revenue	393,632	382,872	+2.8%	521,531	513,050	+1.7%	634,835	623,667	+1.8%
YoY	82.3%	78.0%	+433 bps	32.5%	34.0%	-151 bps	21.7%	21.6%	+16 bps
Gross Margin (excl. SBC)	75.0%	74.8%	+17 bps	75.1%	75.0%	+14 bps	75.2%	75.1%	+11 bps
Operating Income (excl. SBC)	269,703	258,960	+4.1%	361,111	350,565	+3.0%	441,371	429,678	+2.7%
EPS (excl. SBC)	\$9.30	\$9.05	+2.7%	\$12.65	\$12.45	+1.6%	\$15.80	\$15.60	+1.3%

Source: Company data, Goldman Sachs Global Investment Research

10-Year Treasury Constant Maturity Minus 2-Year Treasury Constant Maturity - T10Y2Y (FRED) - 1 Day - USD

10-Year Minus 2-Year Yield



0.59

0.59

ALL STAR CHARTS
GOLD RUSH



Private Credit Default Rate

Software = 40% of PE-backed loans. AI is gutting the collateral.



Financials XLF



FINANCIAL

BANKS - DIVERSIFIED

JPM
-4.09%

BAC
-5.97%

HSBC
+5.80%

MUFG
-3.90%

C
-5.41%

SAN
-3.02%

WFC
-8.29%

TD
+0.72%

UBS
-2.65%

BMO
-1.38

RY
-3.02%

SMFG
-4.08%

BNS
-2.12

BCS
-6.44%

BBVA
-1.62%

CM
+1.39

ING
-3.27%

BK

BANKS - REGIONAL

HDB
-4.00

USB
-6.80

DB
-3.47

TFC
-5.64

NWG
-1.45

ITUB
-4.47

MFG
-5.13

PNC
-8.87

NU
-14.31

IBN
-1.54

LYG
-3.75

CREDIT SERVICES

V
-0.81%

MA
-1.99%

AXP
-10.55%

COF
-5.75

PYPL
+10.61

SYF
-5.94

SOFI
-7.67

AFRM
-8.87

INSURANCE - DIVERSI

BRK-B
+1.30%

AIG
+0.39

HIG
-1.13

SLF
-0.74

ACGL
+1.84

BNT

AEG

ASSET MANAGEMEN

BLK
-2.69%

KKR
-13.22%

BAM
-7.36%

APO
-12.54

AMP
-0.68

ARES
-9.15

BX
-6.17%

STT
+0.16

TROW
-0.69

PFG
-0.62

CG
-2.02

PHYS
+3.83

RJF
-2.88

OWL
-2.50

CEF

NTRS
-1.44

PSLV

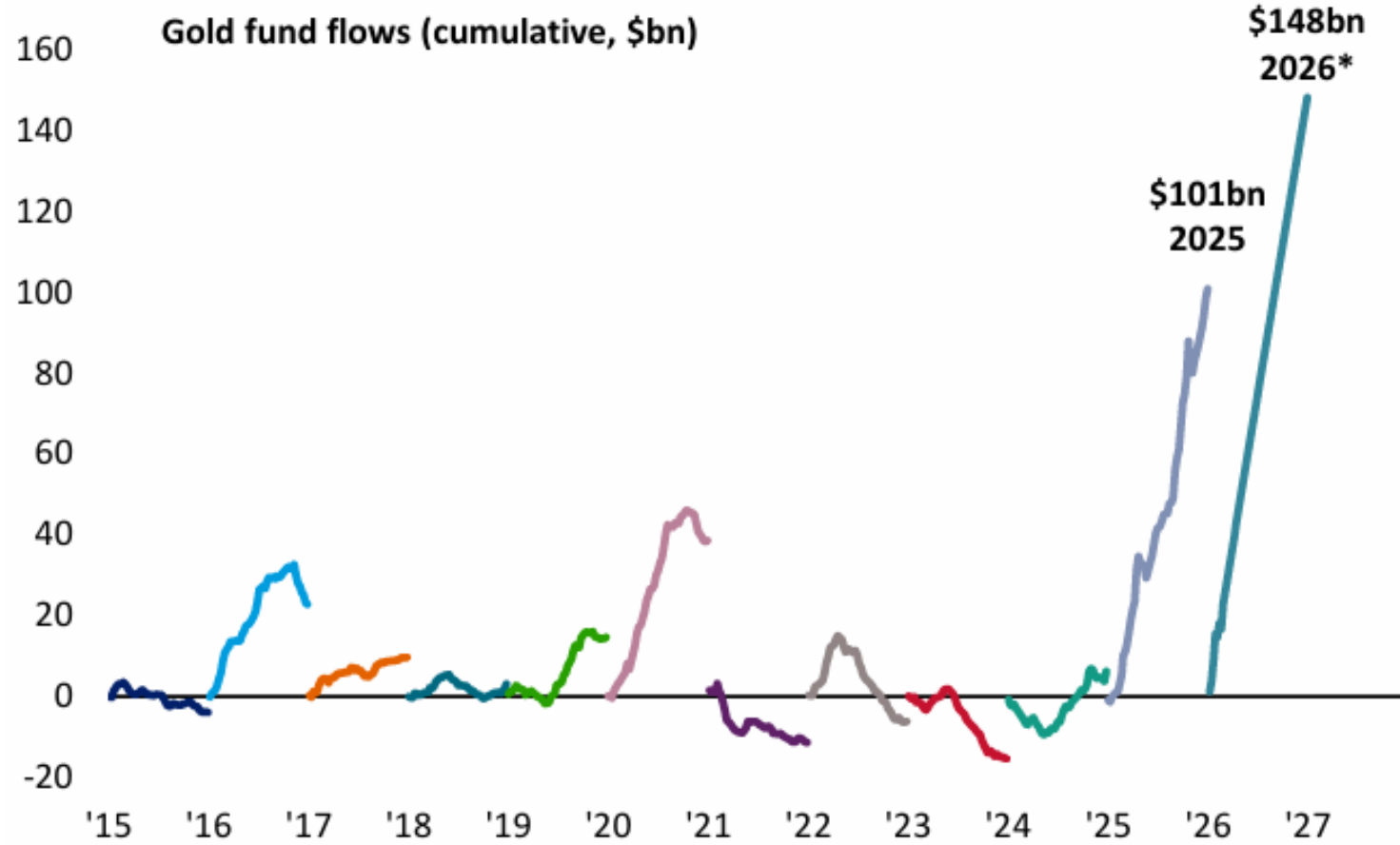
JHG

商品



Chart 8: Gold inflows annualizing record \$148bn

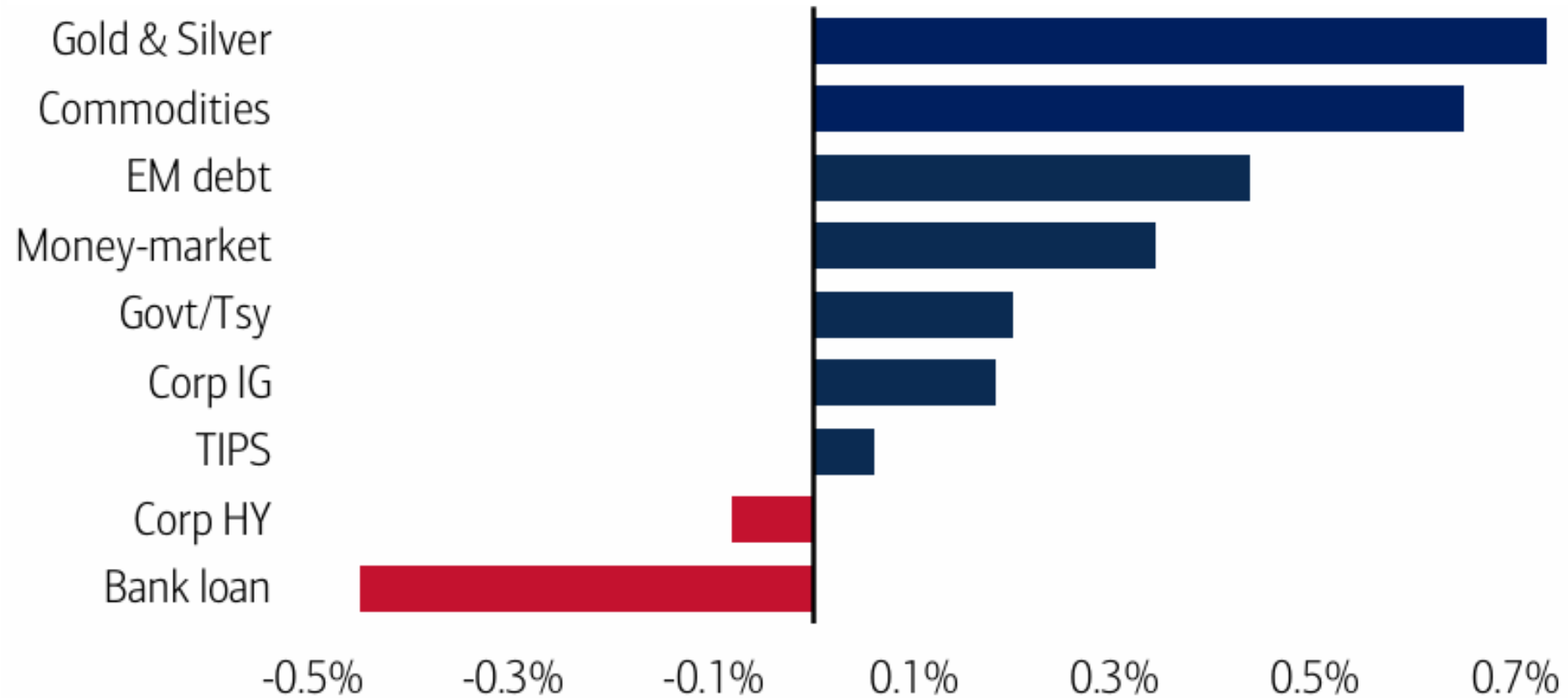
Gold fund cumulative flows by year (\$bn)



Source: BofA Global Investment Strategy, EPFR. *2026 YTD annualized

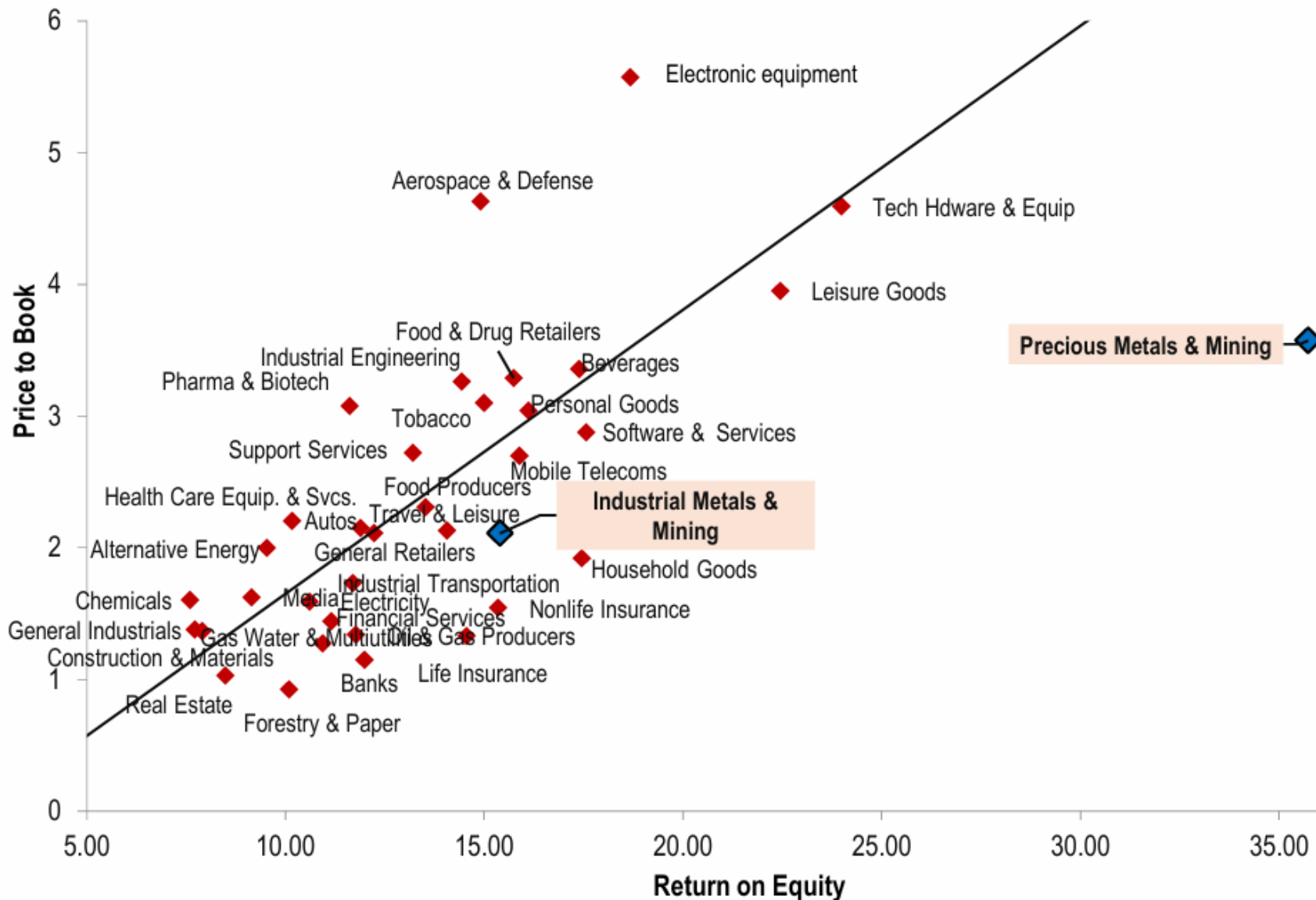
Chart 13: FICC inflows to gold & silver, commodities, EM debt

Weekly FICC flows as a % AUM



Source: EPFR Global

10. Return on equity vs Price to Book for EM industry groups



Source: FTSE Russell, FactSet, HSBC

BRENT

Daily



72.6400

Equal-Weight Precious Metals Index

Gold Futures
Silver Futures
Platinum Futures

11-Year Uptrend

All-Time High

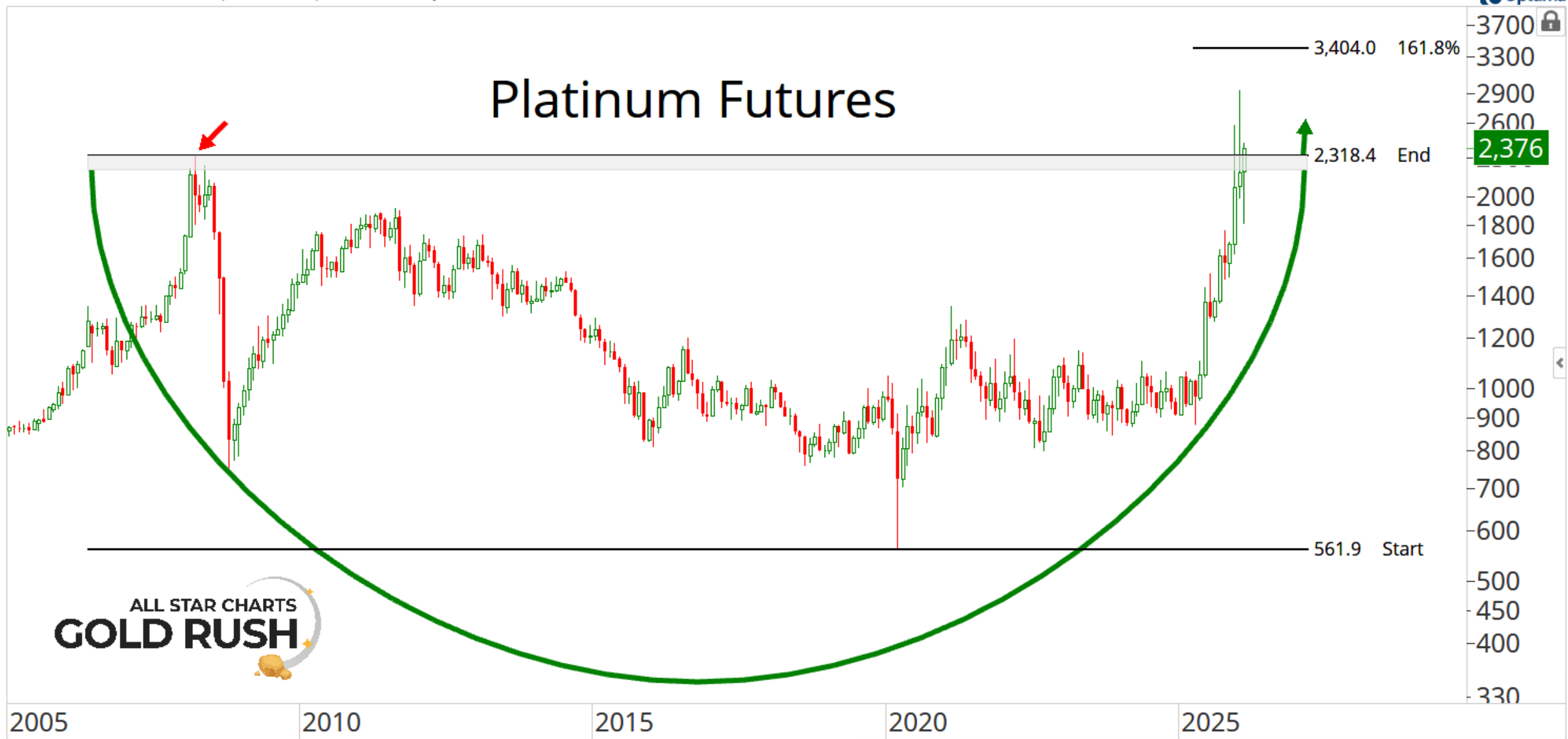
979

14-Year Consolidation

ALL STAR CHARTS
GOLD RUSH



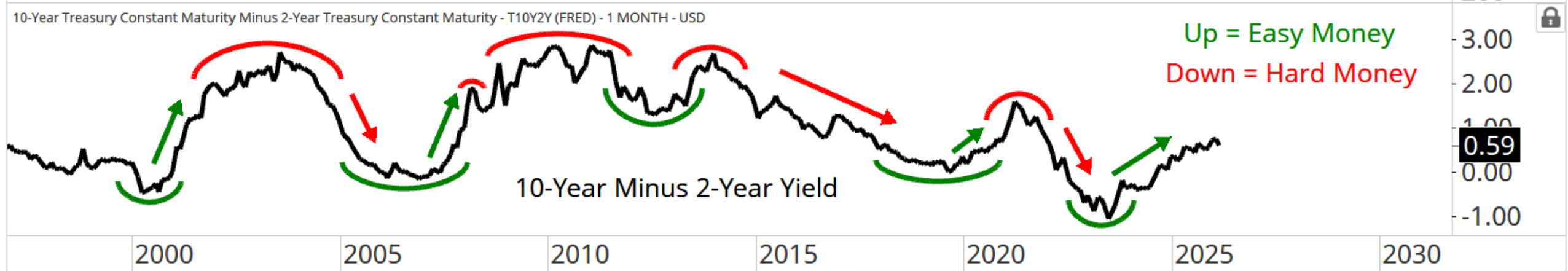
Platinum Futures



黄金



Gold Futures



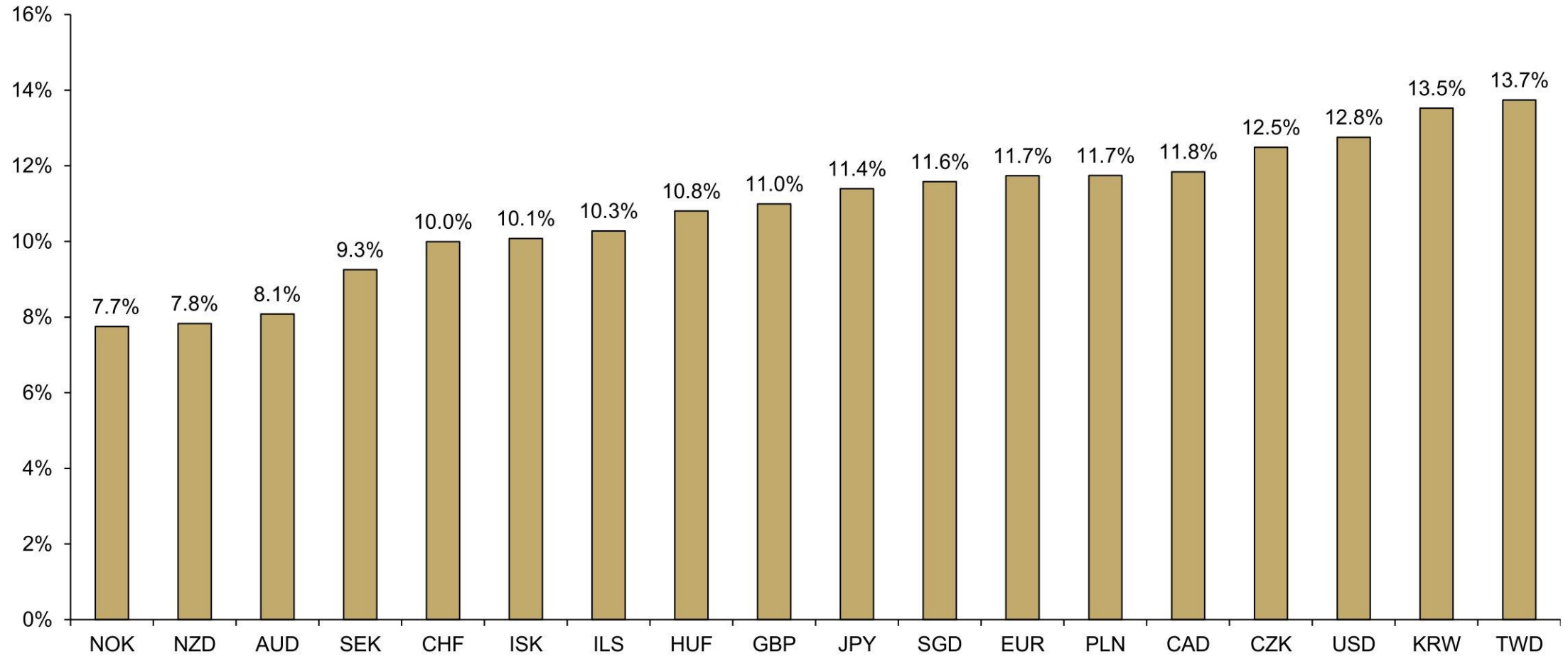
Incrementum Precious Metals Mining Universe (Market Cap > USD 1bn): Top and Bottom 10 Performers, in USD, 01/31/2026

DAYS	30D		60D		90D	
TOP						
1	57.13%	Hycroft Mining Holding Corporation	407.49%	Hemlo Mining Corp	407.49%	Hemlo Mining Corp
2	49.14%	Zijin Gold International Co Ltd	216.26%	Hycroft Mining Holding Corporation	391.45%	Hycroft Mining Holding Corporation
3	44.77%	Avino Silver & Gold Mines Ltd	73.78%	Merdeka Gold Resources PT Tbk	112.95%	Hochschild Mining PLC
4	42.39%	Orezone Gold Corp	68.88%	Alkane Resources Ltd	107.23%	Allied Gold Corp
5	37.74%	Allied Gold Corp	68.15%	Greatland Resources Ltd	97.00%	Aura Minerals Inc
6	33.75%	Hochschild Mining PLC	67.67%	Hochschild Mining PLC	96.16%	Greatland Resources Ltd
7	33.45%	Aneka Tambang Tbk PT	61.40%	Avino Silver & Gold Mines Ltd	93.33%	Avino Silver & Gold Mines Ltd
8	32.11%	Elemental Royalty Corp	60.63%	Orezone Gold Corp	83.78%	Orezone Gold Corp
9	30.75%	Greatland Resources Ltd	58.43%	Aura Minerals Inc	82.01%	Impala Platinum Holdings Ltd
10	30.47%	McEwen Inc	57.29%	Kingsgate Consolidated Ltd	80.99%	Montage Gold Corp
BOTTOM						
1	-12.74%	Ora Banda Mining Ltd	-14.24%	NovaGold Resources Inc	-6.98%	Asante Gold Corp
2	-9.74%	Lundin Gold Inc	-8.83%	Asante Gold Corp	1.20%	SSR Mining Inc
3	-8.13%	Southern Cross Gold Consolidated Ltd	-8.82%	Lundin Gold Inc	5.31%	NovaGold Resources Inc
4	-6.33%	NovaGold Resources Inc	-1.41%	Fortuna Mining Corp	5.73%	Pantoro Gold Ltd
5	-4.61%	Seabridge Gold Inc	-0.30%	Alamos Gold Inc	8.41%	Wesdome Gold Mines Ltd
6	-4.35%	Alamos Gold Inc	0.25%	Triple Flag Precious Metals Corp	8.67%	Compania Minera Poderosa SA
7	-3.63%	Rio2 Ltd	0.31%	Seabridge Gold Inc	10.18%	Lundin Gold Inc
8	-1.18%	Wesdome Gold Mines Ltd	0.47%	Pantoro Gold Ltd	10.65%	Perpetua Resources Corp
9	-1.04%	Snowline Gold Corp	1.65%	SSR Mining Inc	11.13%	B2Gold Corp
10	-0.31%	Fortuna Mining Corp	2.02%	Equinox Gold Corp	12.51%	Ora Banda Mining Ltd

Source: LSEG, Incrementum AG



Gold in Various Developed Market Currencies, 2026 YTD



Source: LSEG, Incrementum AG

白銀



CFDs on Silver (US\$ / OZ) · 1h · TVC O93.7854 H93.8940 L93.5870 C93.7600 -0.0280 (-0.03%)

USD

140.0000

130.0000

120.0000

110.0000

100.0000

93.7600

90.0000

80.0000

70.0000

60.0000

50.0000

40.0000



XAG/USD, Real-time Currencies: XAG/USD, 240

SILVER

January 29

+35%



Amplify Junior Silver Miners ETF, United States, NYSE:SILJ, 60

SILJ

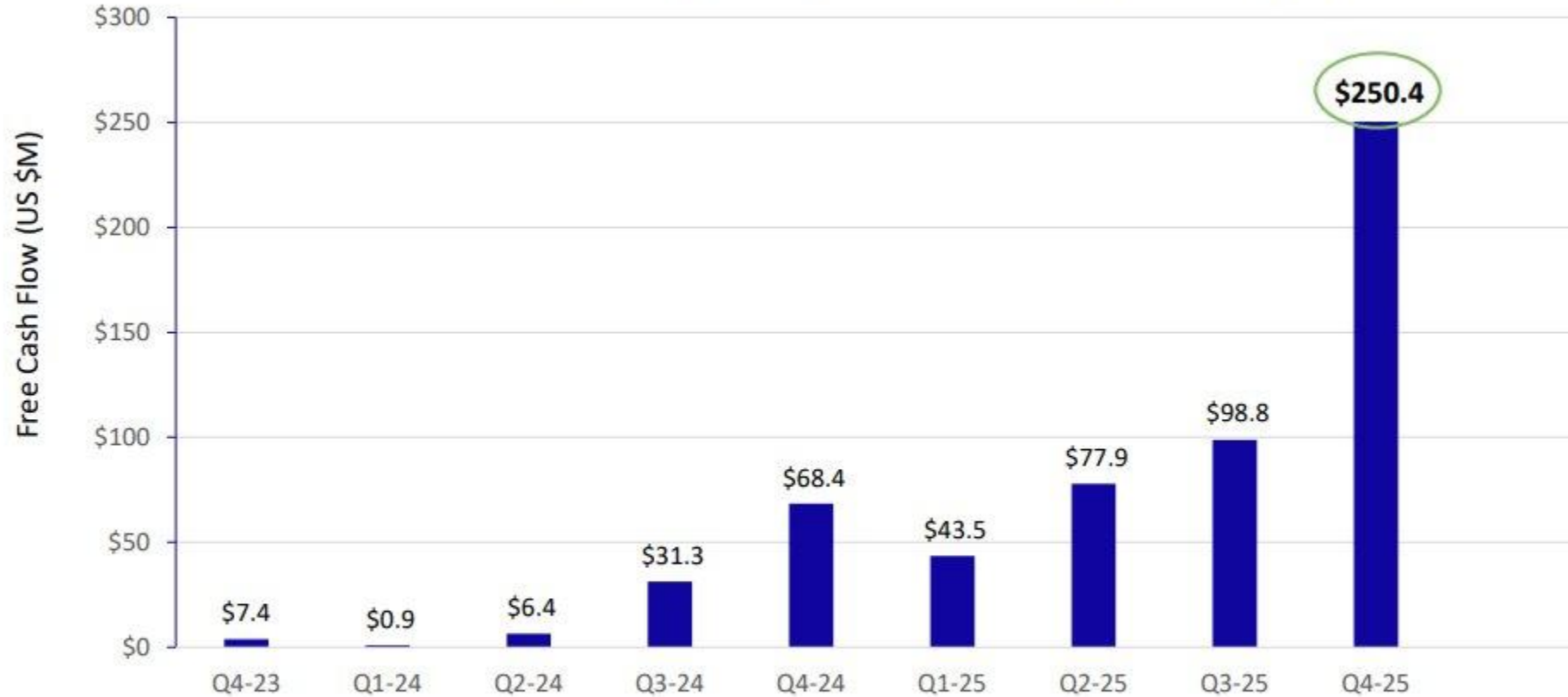
January 29

+4%



Quarterly Free Cash Flow Performance

Free Cash Flow – Operating Cash Flows less Sustaining Capex

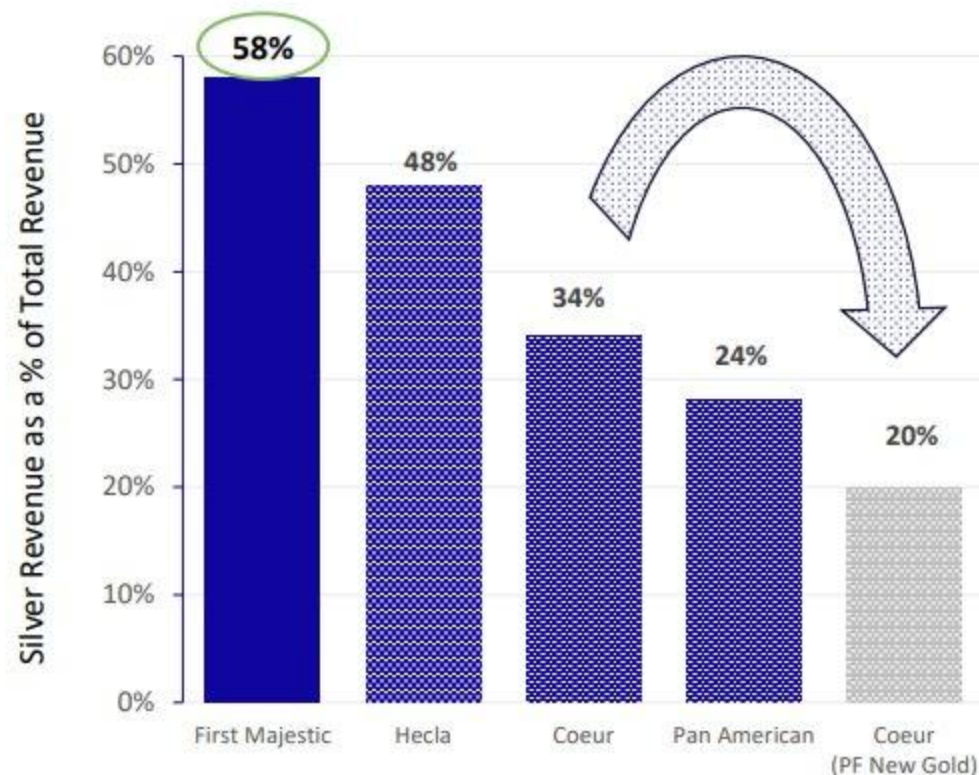


Step change increase in cash flow generation in 2025 from Los Gatos addition, operating discipline & cost efficiency, and increased silver price → **Flexibility to Invest in Further Growth**

Q4-25 & 2025 Highlights

- ✓ Q4 Silver Production of **4.2M oz**, and **15.4M oz** in 2025
- ✓ Strong Q4 Silver Equivalent Production: **7.8M oz**, and **31.1M oz** in 2025 (Meeting upwardly revised guidance)
- ✓ Record Revenues: **\$464M (up 169%)**, and **\$1,257M (up 174%)** in 2025
- ✓ Average realized silver price: Q4 **\$58.96**, and **\$41.52** in 2025
- ✓ Record First Mint revenues: Q4 **\$22.7M**, and **\$49.4M** in 2025
- ✓ Record Cash Flow from Operations: Q4 **\$301M** (\$0.61/share), and **\$667M** (\$1.39/share) in 2025
- ✓ Continued exploration success at San Dimas, Santa Elena and Los Gatos

2025 Silver Revenue as a % of Total Revenue



Source: Company Filings and Estimates

Strong Balance Sheet: Record treasury position
of **\$938M**

SHARES SILVER TRUST CUSIP 46428Q10

1) Current 2) Historical 3) Matrix 4) Ownership Summary 5) Insider Transactions 6) Options 7) Issuer Debt

Search Name Default - No Search Selected 21) Save Search 22) Delete Search 23) Refine Search

Next Search Holder Group All Holders Investment Manager View

4) Color Legend Shrs Out 571.5M % Out 37.76 Float/Shrs Out N.A. SI % Out 12.87

Holder Name	Portfolio Name	Source	Opt	Position	% Out	Latest Chg
1. Jane Street Group LLC	Jane Street Group LLC	13F	Y	20,672,537	3.62	20,631,344
2. Blackrock Inc		13G		20,545,908	3.60	0
3. Morgan Stanley		ULT-AGG		18,073,229	3.16	-3,768,300
4. Bank of America Corp	Bank of America Corp	13F	Y	10,517,819	1.84	-618,260
5. UBS AG		ULT-AGG		10,146,408	1.78	2,729,218
6. LPL Financial LLC	LPL Financial LLC	13F	Y	8,748,745	1.53	-148,245
7. Is Portfoy Yonetimi AS	Multiple Portfolios	MF-AGG		4,177,580	0.73	2,522,980
8. SG Americas Securities LLC	SG Americas Securities LLC	13F	Y	4,067,660	0.71	152,020
9. Royal Bank of Canada		ULT-AGG		3,154,315	0.55	333,391
10. Raymond James Financial Inc	Raymond James Financial Inc	13F	Y	2,958,425	0.52	172,253
11. BNP Paribas SA		ULT-AGG		2,922,946	0.51	-1,212,135
12. Ameriprise Financial Inc		ULT-AGG		2,680,545	0.47	4,327
13. Goldman Sachs Group Inc/The		ULT-AGG		2,276,350	0.40	1,094,155
14. Bank of Montreal	Bank of Montreal	13F	Y	2,218,970	0.39	1,809,188
15. Genstar Capital LLC		ULT-AGG		2,076,386	0.36	116,215
16. CTC LLC	CTC LLC	13F	Y	1,948,468	0.34	1,948,468
17. Mainstay Capital Management LLC	Mainstay Capital Management LLC	13F		1,824,479	0.32	824,589
18. Marshall Wace Asset Management Ltd		ULT-AGG		1,668,410	0.29	1,314,407
19. HighTower Advisors LLC	HighTower Advisors LLC	13F		1,587,507	0.28	-162,617
20. Power Corp of Canada		ULT-AGG		1,518,585	0.27	387,099

财新：传中国监管机构审查Jane Street在中国ETF市场交易中的行为模式

BLOCKBEATS 

2026-02-26 10:15



BlockBeats 消息，2 月 26 日，有传闻称中国监管机构在审查 Jane Street 在中国 ETF 市场交易中的行为模式。但一位接近 Jane Street 的人士称：「对这些传闻一无所知，也没有任何理由相信它们是真的，不应该将这些传闻与 Jane Street 联系起来。」本周 Jane Street 及其联合创始人和两名员工被指控内幕交易、欺诈和市场操纵，这些行为还被指加速导致了 2022 年 TerraUSD (UST) 稳定币及其姊妹代币 Luna 价值 400 亿美元的崩盘。

成立于 1999 年的 Jane Street 是全球最大的自营量化交易公司之一，其 2024 年净交易收入超过 200 亿美元，净利润接近 130 亿美元，不同于对冲基金，Jane Street 并不接受外部客户资金，因此披露义务远低于传统资管机构，这种结构使其长期保持神秘感。(财新)

69,398 SELL 3 69,401 BUY

Vol - BTC 301

JANE STREET 10AM SELLS





PREVIOUS SUPPORT

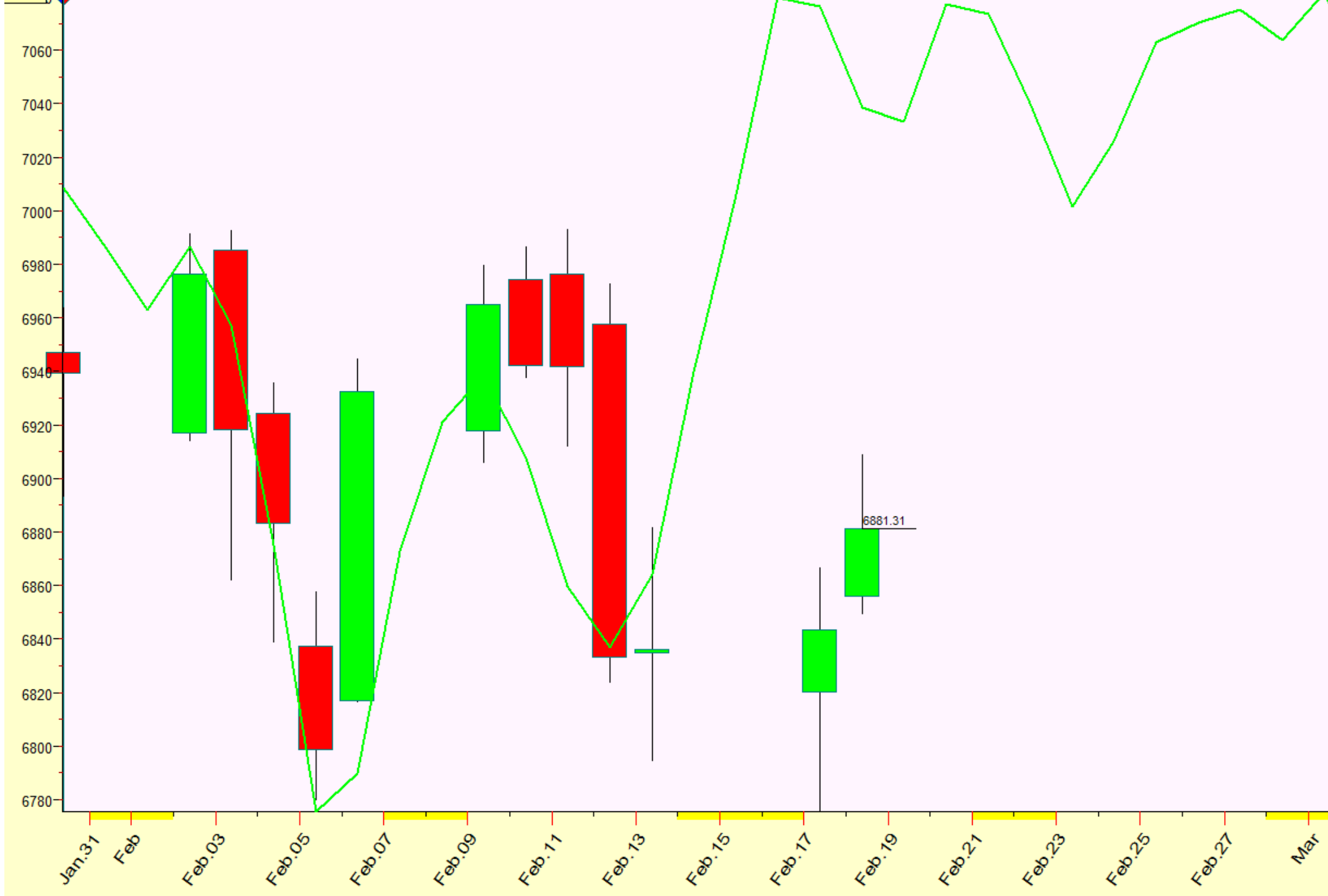
ACTS AS A RESISTANCE



124.0000
120.0000
116.0000
112.0000
108.0000
104.0000
100.0000
96.0000
92.0000
89.4025
88.0000
84.0000
80.0000
76.0000
72.0000
68.0000
64.0000
60.0000
56.0000
52.0000
48.0000
44.0000
40.0000

周期



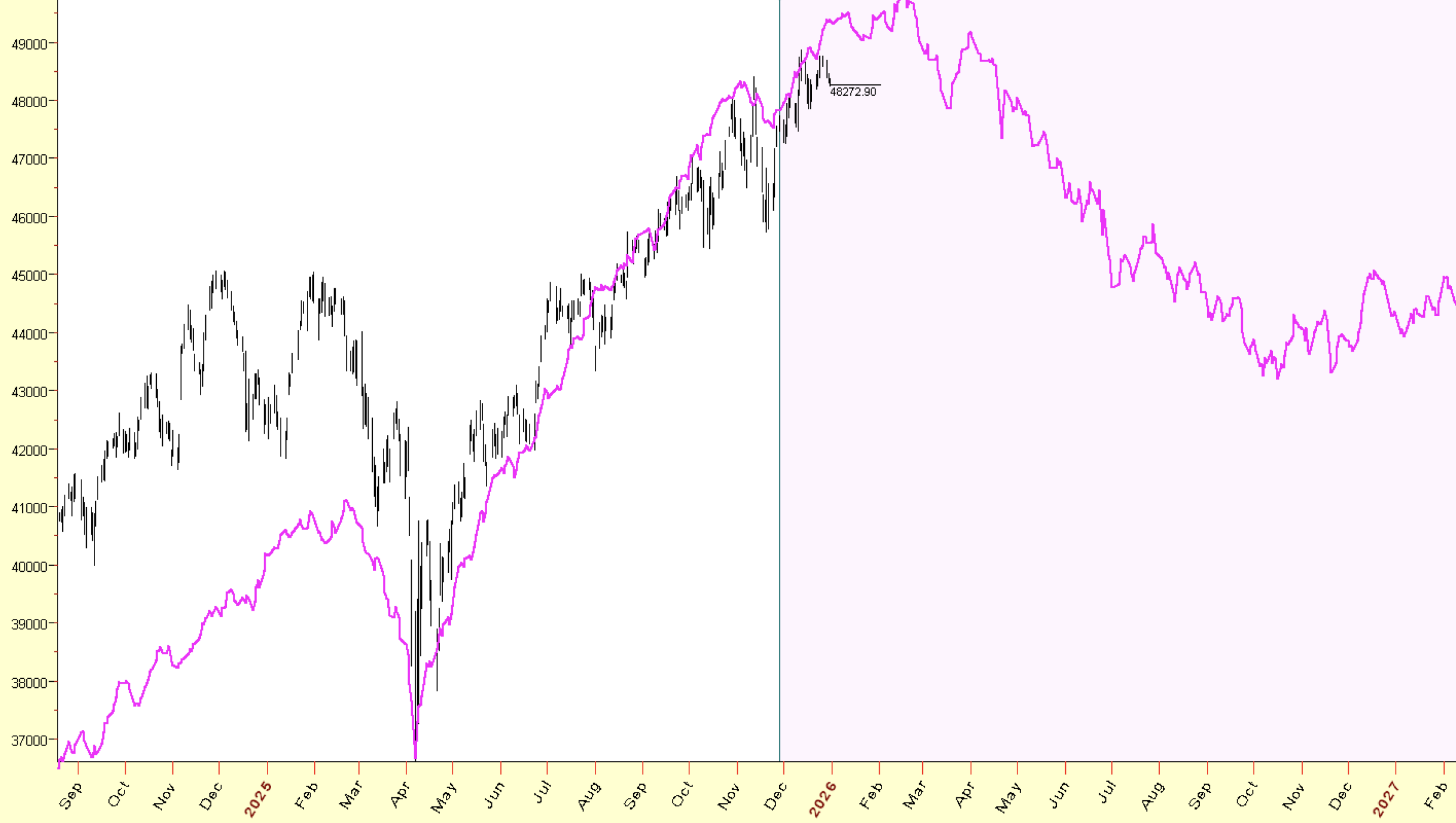


Major Cycle Projection For 2026

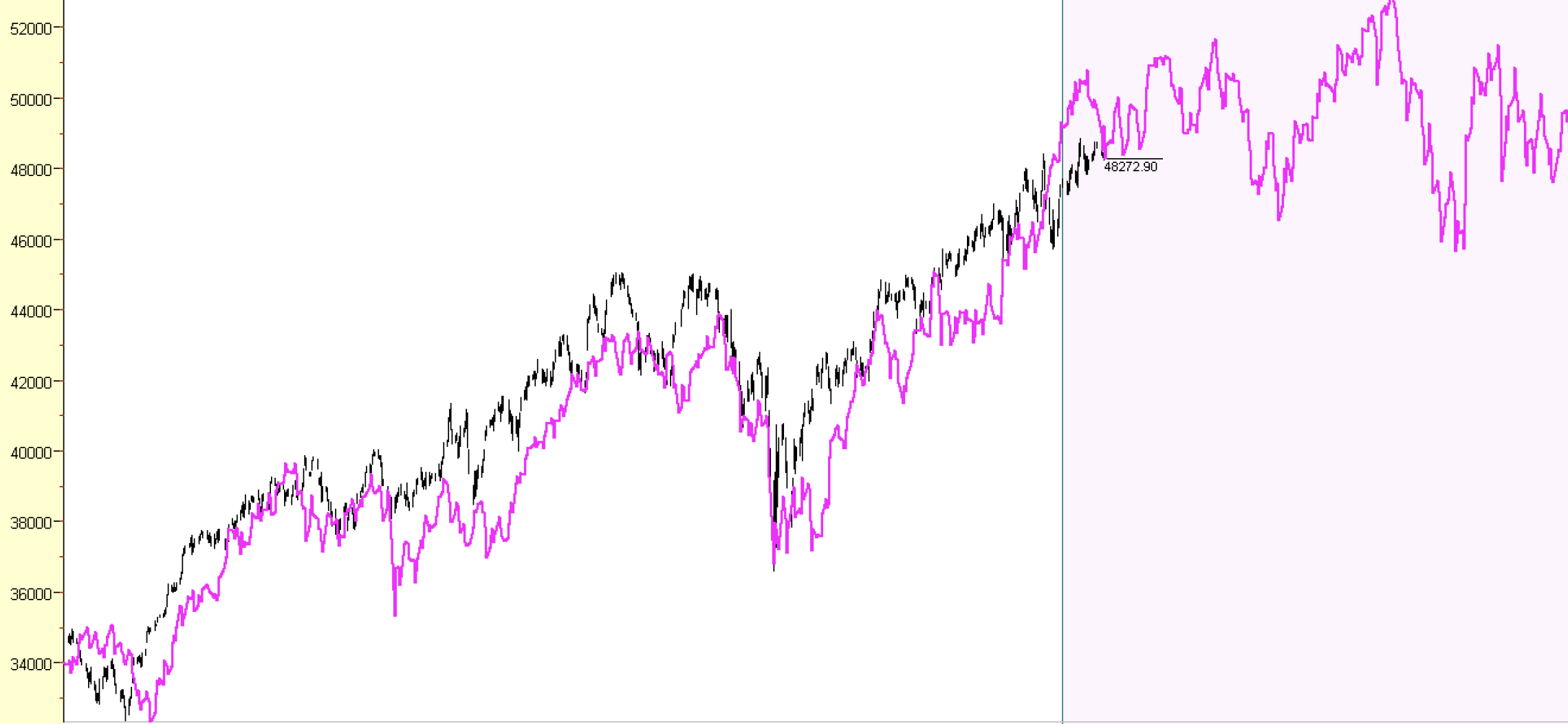
As I see it, shortly after the first of the year, say mid-February, a decline begins. That will lead to a late May to June base. This will be the best buy point leading to the 2027 bear raid on stocks. **If pushed for the absolute low, I would say June 16th.**



Chart 4: Cycle Projection for 2026







Feb Mar Apr May Jun Jul Aug Sep Oct Nov Dec 1998 Feb Mar Apr May Jun Jul Aug Sep Oct Nov Dec 1999 Feb Mar Apr May Jun Jul Aug Sep Oct Nov Dec 2000 Feb Mar Apr May Jun

14.5% Lag=9716=26.60 y

Oct Nov Dec 2024 Feb Mar Apr May Jun Jul Aug Sep Oct Nov Dec 2025 Feb Mar Apr May Jun Jul Aug Sep Oct Nov Dec 2026 Feb Mar Apr May Jun Jul Aug Sep Oct Nov Dec 2027

下周財報



12.8890

29.0090

8.80090

45.8890

Monday		Tuesday		Wednesday		Thursday		Friday
Before Open	After Close	Before Open	After Close	Before Open	After Close	Before Open	After Close	Before Open
 BERKSHIRE HATHAWAY INC.	 CREDO	 TARGET	 CROWDSTRIKE	 Abercrombie & Fitch	 BROADCOM	 ciena	 MARVELL	 Algonquin
 NORWEGIAN CRUISE LINE*	 RIOT	 BEST BUY	 GitLab	 DYCOM	 rigetti	 amprius	 COSTCO WHOLESALE	 DRILLING TOOLS INTERNATIONAL
 xeris BIOPHARMA	 BIG BEAR AI	 sea	 rigel	 WIX	 Veeva	 Kroger	 GoPro	 GENESCO
 CALIFORNIA RESOURCES CORPORATION	 mongoDB	 AutoZone	 mec	 Stevanato Group	 okta	 JD.COM	 samsara	 EMBRAER
 AAON	 plug	 Paysafe	 FUELTECH	 SmartRent	 Ooma	 Liquidia	 pattern	 EVE
 compugen	 QCI QUANTUM COMPUTING INC	 ANTALPHA	 RAYONIER Advanced Materials	 Holley	 Webull	 TANGO therapeutics	 BCP Investment Corporation	
 Astrana Health	 AST SpaceMobile	 sportradar	 box	 EUROPEAN WAX CENTER	 AMERICAN EAGLE OUTFITTERS	 VICTORIA'S SECRET	 omada	
 ADT	 aes	 onon	 B&G FOODS, INC.	 NATIONAL VISION	 Energy Superintelligence	 Burlington	 PETROBRAS	
 Sealed Air	 ARCHER	 EVgo	 evolus	 EYEPOINT PHARMACEUTICALS	 Niagen	 KURA ONCOLOGY	 audioeye	
 uniQure	 OUSTER	 908devices	 HORIZON TECHNOLOGY	 riskified	 Cracker Barrel	 bilibili	 GUIDEWIRE	